

PLAINVIEW-OLD BETHPAGE CENTRAL SCHOOL DISTRICT



REOPENING PLAN 2020-2021

TABLE OF CONTENTS

INTRODUCTION	4
<i>Definitions/Terms Referenced in the POB Plan</i>	
OVERVIEW OF REOPENING PLAN	
DISTRICT-WIDE REOPENING COMMITTEE	6-7
COMMUNICATION/FAMILY AND COMMUNITY ENGAGEMENT	7
<i>District Committees</i>	
<i>District Website, Facebook Page, School Messenger</i>	
<i>Presentations to the Public</i>	
<i>Learning Partner Feedback</i>	
HEALTH AND SAFETY	8
<i>Health & Safety Protocols, Screening, Face Masks,</i>	
<i>Social Distancing, Hand Hygiene,</i>	
<i>Management of COVID-19 Cases, Drills</i>	
FACILITIES	12
<i>Air Filtration, Cleaning & Disinfecting Protocols, Equipment</i>	
CHILD NUTRITION	13
TRANSPORTATION	13-14
<i>Assurances</i>	
<i>Schedules</i>	
SOCIAL EMOTIONAL WELL-BEING	15
<i>Resources to Support</i>	
<i>Curriculum/Programs</i>	
SCHOOL SCHEDULES	16
<i>Elementary</i>	
<i>Middle School (Grades 5 and 6/Grades 7 and 8)</i>	
<i>High School</i>	
TEACHING AND LEARNING	18
SPECIAL EDUCATION	20
ENGLISH LANGUAGE LEARNERS	20
<i>Visitors, Events, Meetings</i>	
PHYSICAL EDUCATION GUIDELINES FOR K-12	21
<i>Recess</i>	
TECHNOLOGY AND CONNECTIVITY	23
<i>Chromebook Distribution</i>	
<i>Ask the Tech</i>	
ATHLETICS AND EXTRACURRICULAR ACTIVITIES	23
PROFESSIONAL DEVELOPMENT	24
GUIDANCE	25
APPENDIX: FAQ's	27

PLAINVIEW-OLD BETHPAGE CENTRAL SCHOOL DISTRICT

BOARD OF EDUCATION

Mrs. Debbie Bernstein
President

Mr. Seth Greenberg
Vice President

Trustees:

Mr. Gary Bettan
Mrs. Ginger Lieberman
Mrs. Tara Rock
Mrs. Lauren Sackstein
Mrs. Susan Stewart

ADMINISTRATION

Dr. Mary T. O'Meara
Superintendent of Schools

Mr. Richard J. Cunningham
Assistant Superintendent for Business

Mr. Christopher T. Donarummo
Assistant Superintendent for Student Services & Safety

Mrs. Joanne F. Mannion
Assistant Superintendent for Curriculum & Instruction

Dr. Vincent K. Mulieri
Assistant Superintendent for Human Resources

Introduction

The Plainview-Old Bethpage Central School District has a long-standing commitment to engaging its learning partners in the educational program. During a global pandemic, this engagement was essential for the academic, physical, social-emotional and mental health of our students, staff, and families. The planning for reopening began in the spring with a District Reopening Committee and sub-committees resulting in a formal recommendation to the Board of Education on June 22nd. Understanding what our learning community valued, the District continued reopening planning over the summer, adjusting as new guidelines and requirements were released by The Center for Disease Control (CDC), the New York State Department of Health (DOH) the New York State Education Department (NYSED) and Governor Cuomo.

With a July 31st deadline for plan submission and an August 7th announcement that schools could reopen for in-person instruction, parts of the plan must be fluid. The District understood that the plans must be specific enough to permit families to make informed decisions for their child(ren)'s return to school. The plan is a comprehensive one that will ensure teaching and learning will continue in the safest manner possible for the 2020-21 school year. It is critical students remain connected to our schools and fortunately, through the support of our Board of Education, the District is able to offer a remote learning option for families who have significant vulnerabilities, but also for those who are not comfortable to return to in-person instruction. As has been stated, the District respects the decisions of each family and will not allow the reopening of schools to become an issue that divides the community.

It is the commitment to engaging all our learning partners that makes the Plainview-Old Bethpage Central School District an incredible place to live and work. Preserving the academic programs with robust electives and specials, with a focus on mental health and well-being are essential elements in recovering from this global pandemic. The POB District's theme for the 2020-21 school year, "Lighting the Way Forward", communicates our reopening steps in establishing a well-lit pathway to a safe and meaningful learning environment.

Definitions/Terms Referenced in the POB Plan

Live, Synchronous Learning: Teaching and Learning that occurs simultaneously via Google Meet video-conferencing application.

Virtual Learning: Students learn from another location, not in the school building.

In-Person Instruction: Students learn in the school building.

Centers for Disease Control and Prevention (CDC)

New York State Department of Health (DOH)

New York State Department of Education (NYSED)

Plainview-Old Bethpage Central School District (POB) or "The District"

OVERVIEW OF REOPENING PLAN

The New York State Education Department required all school districts to develop three plans. Our three plans range from least restrictive to most restrictive in order to prepare for various reopening options: A return to **traditional school**, a **hybrid model** that ensures in-person instruction with strict adherence to social distancing rules, and a **remote learning** plan for a complete school closure. Plainview-Old Bethpage Central School District (POB) is also offering a fourth option, a **remote plan**, for the following students: those considered at high-risk for serious illness due to COVID-19; those residing with a person considered at high-risk for serious illness due to COVID-19; and for those whose families are not comfortable sending their students back into buildings for in-person instruction.

The District's **In-Person Plan** strives to maximize the number of students who return to the school buildings, with strict social distancing and cleaning/disinfecting protocols in place. This plan permits:

- 1) All elementary students (K-6) to attend school every day with appropriate social distancing and receive instruction in all subjects and specials.
- 2) All grades 7-12 students to attend school on alternating days, divided by last name:
 - **Monday and Wednesday for A-K families** with appropriate social distancing.
 - **Tuesday and Thursday for L-Z families** with appropriate social distancing.
 - **Fridays are remote learning days for all students.** Teachers will be teaching from their classrooms live via Google Meet for synchronous teaching and learning.

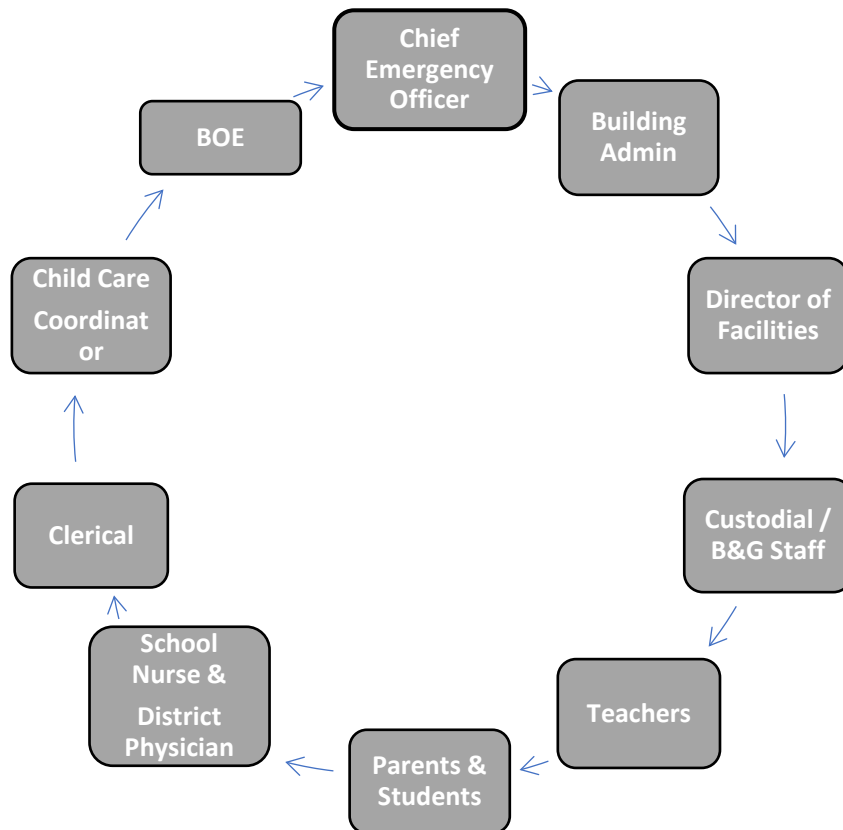
On the two days students are not in school, they will be required to log into their Google Classroom by subject during the scheduled time of class for attendance and to engage in the activities, assignments, and/or lessons for that period.

A plan for **Virtual** reopening, should a local or NYS agency issue a directive requiring the closure of school buildings, has been planned. In this model, all students would follow their school schedule online for live, synchronous teaching and learning every day. Teachers will distribute their Google Meet and Google Classroom codes to students as part of their first day of school documents.

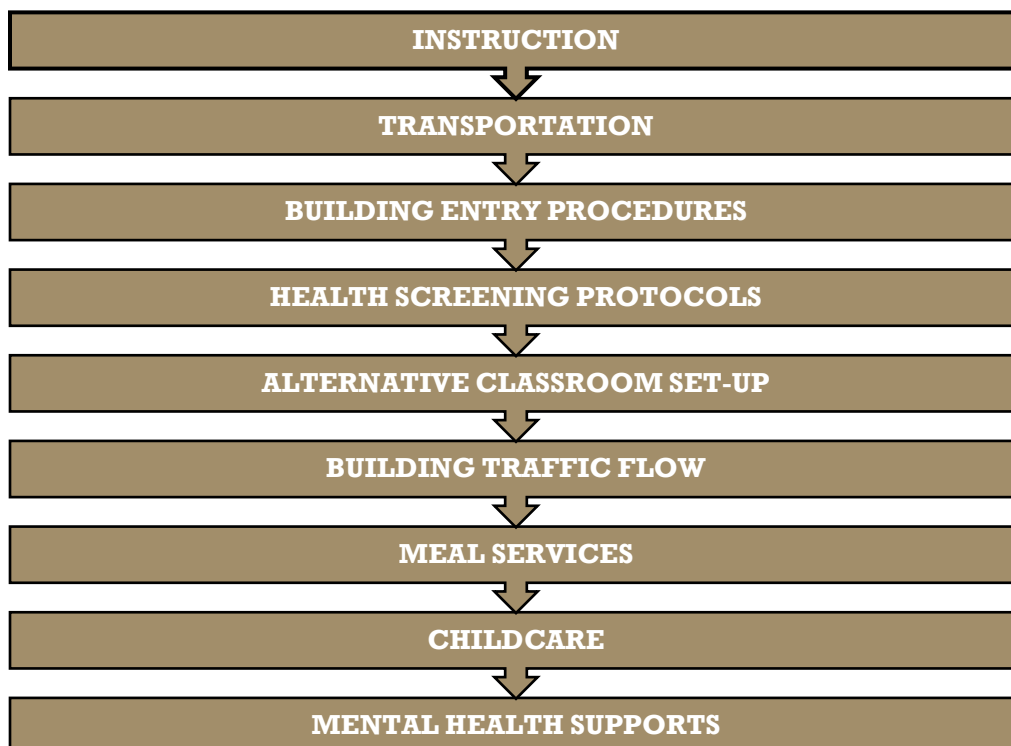
In order to adequately prepare staff for the return of students, the first day of school for students has been adjusted as follows:

- September 8th all 1st-6th grade students return to school
- September 8th all L-Z students in grades 7-12 return to school
- September 9th all Kindergarten students return to school
- September 9th all A-K students in grades 7-12 return to school

District-Wide Reopening Committee



The committee focused on critical areas in May and June as per the chart below.



The District Reopening Committee met several times as an entire committee and in sub-committees based on the various categories. In addition, bi-weekly meetings were held with the PTA Presidents, SEPTA, and the Student Council's Executive Board. During the summer, additional meetings were held with the Plainview Congress of Teachers (PCT), the District Leadership Team, and PTA Executive Board and Presidents to elicit feedback based on subsequent guidance from the CDC, DOH, and NYSED.

The instructional models decided were based on the recommendations to the Board of Education from the District-Wide Reopening Committee and Instructional Sub-Committee which were presented at the Board of Education meeting on June 22, 2020 ([link here](#)). The recommendations are aligned to the [NYSED Guidance](#) on school schedules, "...may consider various reopening plans and schedules that stagger or alternate their students' return to campus...with district stakeholders when considering alternate schedules" (p.7). These recommendations included:

- Dividing students by alphabet
- Alternating Day Schedule Mon/Wed, Tue/Thurs, alternating Fridays
- Students follow their traditional schedule
- Preserving specials and electives in the students' schedules
- Students attend school for a full-day
- Special Education and elementary students should be considered separately in reopening plans
- Return to the Board of Education Grading Policy
- Additional live instruction to the online learning plan (aka remote learning plan)

COMMUNICATION

As the planning continued through June and July, the District used several means to communicate to the community and staff, including:

The District website: www.pobschools.org

Town Hall Meeting, July 30, 2020 ([link here](#)) and future meetings: August 18, 19, and 20, 2020

Board of Education Meetings July 31, 2020, and future meeting: August 17, 2020

The District's Facebook Page ([link here](#)) <https://www.facebook.com/pobschools/>

Bi-Weekly eBlasts to the community and staff ([link here](#)).

HEALTH AND SAFETY

The District used all the recommended preventative actions to assure the health and safety of all students and staff as outlined in the chart below.

Recommended Preventive Actions	Staff	Students
Daily Health Checks	Self-Screening - Stay Home if Sick	Parent/Guardian Screening - Stay Home if Sick
Healthy Hygiene Practices	Hand and Respiratory Hygiene Signage & Training	Hand and Respiratory Hygiene Signage & Instruction
Social Distancing	Reduced Class Sizes & Modified Classroom Configuration and Building Flow	Reduced Class Sizes and Bus Capacity & Modified Classroom Configuration and Building Flow
PPE & Cloth Face Coverings	Staff or District Provided Masks All Other PPE Provided by District (Specialty Shields, Gloves, etc...)	Parent/Guardian or District Provided Masks
Management of Ill Persons	Health Office Assessment & Isolation	
Cleaning & Disinfection	Routine Cleaning & Disinfection of High-Touch Surfaces	

The NYS DOH health screening questions were used to create a Google Form for staff, visitors, and parents/guardians (for their children) to complete prior to entering the schools or riding the buses. School nurses will be assigned the task of alerting the building administrator identified as the COVID-19 Administrator of issues pertaining to “Yes” responses and/or compliance related to the screening form.

The questions on the health care screener include name, building working/visiting, and:

- In the past 14 days have you experienced COVID-19 symptoms? COVID-19 symptoms include fever, chills, cough, shortness of breath, fatigue, muscle aches, headache, new loss of taste or smell, sore throat, congestion or runny nose, nausea, vomiting or diarrhea.
- In the past 14 days have you had a positive COVID-19 test result?
- Have you had close contact with someone with a confirmed or suspected COVID-19 case in the past 14-days?
- Have you traveled internationally or from a state with widespread community transmission of COVID-19 per the New York State Travel Advisory in the past 14 days?

Facemasks will be worn by students, staff and visitors at all times when riding the bus and when in the school building. Students will not be required to wear masks when eating, drinking, or when the core instruction requires removal. Social distancing will be assured whenever a mask is removed. Students who cannot wear a mask due to medical or mental health reasons will submit documentation to the building nurse. Regularly scheduled mask breaks will occur according to the parameters below.

- 10 minutes per 45 minutes at the elementary level (K-4)
- 10 minutes per 37-minute period at the middle and high school level (5-12)
- Students will not be unmasked as whole class except when eating lunch

Social Distancing rules of 6-ft distance or plastic barrier will be assured in all classrooms, cafeterias, and large group instructional areas. As per NYSED guidance, playing of musical instruments and singing require 12-ft social distancing. In addition, traffic flow patterns have been developed by building principals to limit the amount of close contact between students in the hallways. Also, signage on the floors and throughout the building will assist staff and students as they move about the building.



Daily Temperature Screenings will be scheduled in each building throughout the day. The school nurses will screen students and staff and maintain a record of the classes and staff screened. If a student has a temperature above 100°, he/she will be escorted to the quarantine room and remain there until picked-up. If a staff member has a temperature above 100°, he/she will be directed home and to seek medical attention.

Management of COVID-19 Case Occurrence from the CDC explains

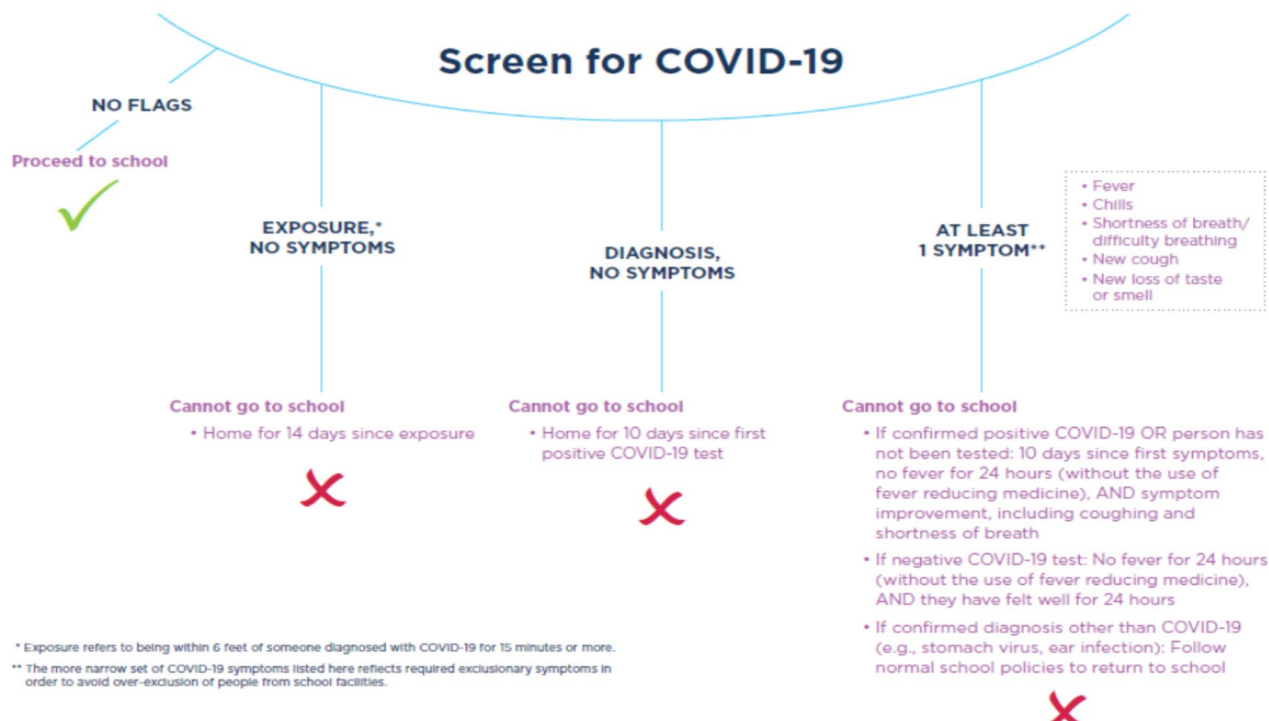
- A single case of COVID-19 in a school would not likely warrant closing the entire school, especially if levels of community transmission are low.
- If the transmission of the virus within a school is higher than that of the community, or if the school is the source of an outbreak, administrators will work collaboratively with local health officials to determine if temporary school closure is necessary.
- If students are kept in cohorts to minimize mixing of students, exposure to an individual with COVID-19 may be limited to one particular cohort and not pose a broad risk to the rest of the school. Cohorts that have been in close contact with someone with COVID-19 can switch to virtual learning and stay home in accordance with CDC's guidelines for quarantine and self-isolation, and the school may remain open.
-

The District will add additional nurses to each building. Elementary and middle schools will have two nurses per building, and JFKHS will have three nurses.

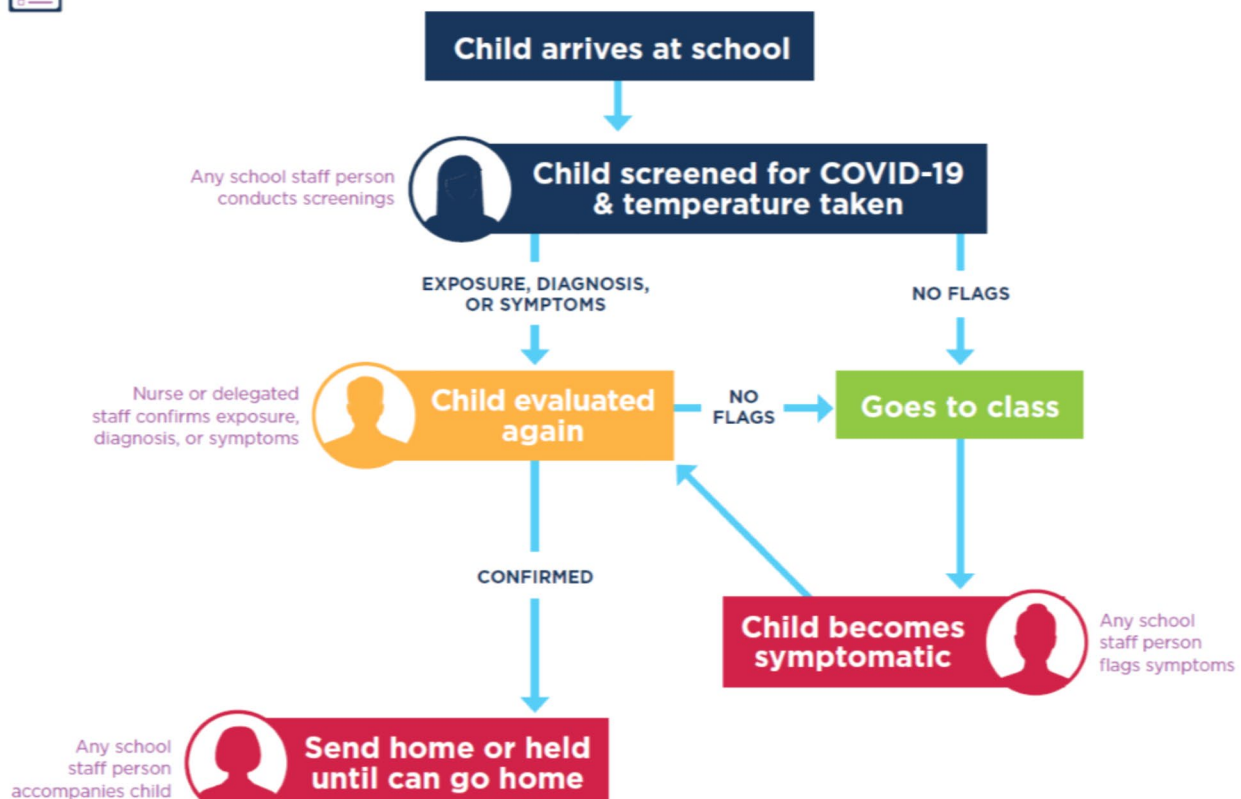
The illustrations on the next page and direction from the Nassau County Department of Health will be used to address suspected and confirmed cases of COVID-19 cases in our schools.



Screening Flow Chart



Staff Roles Flow Chart



Protocols Used for Suspected/Positive COVID-19 Cases adhere to the CDC and DOH recommendations. The District will engage in the protocols below when there is a suspected or confirmed case of COVID-19 in a school.

CDC and NYSDOH Recommendations

- Close off infected area(s) and do not use until after cleaning and disinfection.
- Increase ventilation by opening outside doors and windows.
- Waiting at least 24-hours before cleaning and disinfection.
- Clean and disinfect impacted area(s).
- Resume school activities immediately after cleaning and disinfection.

Return to School After Illness

- Once there is no fever, without the use of fever reducing medicine, and they have felt well for 24-hours
- Healthcare Professional provides written note stating they are safe to return to school.

Positive COVID Cases

- Notify local health department to determine next steps for the school community.

Preparation for the Return of Students and Staff has been extensive. The chart below details the purchases thus far to assure the health and safety of our students and staff.

Items Added to Existing Inventory	Quantity
# of Individual Student Desks	1,296
# of Polycarbonate Barriers	1,135
# of Tri-fold Polycarbonate Desk Partitions	1,600
# of No-contact, Automatic Restroom Fixtures Replaced	370
# of Industrial Disinfecting Misters	23
# Classroom Hand Disinfectant Pumps	450
# Hallway Wall Mounted Disinfectant Pumps	160
# of Face Masks	135,200
# of Clear Masks for Instruction	1,250
# of Infrared Thermometers for Nurses	26
Health-Related Signage	600

FACILITIES

The District has devoted tremendous effort to ensure all buildings are cleaned and disinfected throughout the day and each evening. In addition, investments have been made to ensure proper ventilation in all instructional spaces. These efforts are detailed and illustrated below.


Cleaning and Disinfecting

- Custodial staff received extensive training on cleaning and disinfecting practices.
- Cleaning and disinfecting logs are in place.
- Cleaning and disinfecting performed with products identified by and registered with the Environmental Protection Agency (EPA) as effective against COVID-19.
- Additional cleaning staff has been hired and specialized equipment has been purchased.
- Students will receive disposable desk mats for each class, 7-12 and when eating lunch in the classroom.

Ventilation

- Increased fresh air intake from rooftop and classroom HVAC systems.
- Replaced older rooftop exhaust fans to improve fresh air circulation.
- Rooftop unit filters are being upgraded to MERV-13 filtration.

COVID-19 Cleaning and Disinfection Log



Location: _____

New York State (NYS) [requires](#) regular cleaning and disinfection at least every day, and more frequent cleaning and disinfection of shared objects (such as tools), frequently touched surfaces, and high transit areas, such as restrooms and common areas.

- Examples of high-touch surfaces and objects include meeting tables, chair armrests, doorknobs, cabinet pulls, refrigerator door handles, faucets, toilets and light switches.
- Cleaning and disinfection must be performed with products identified by and registered with the Environmental Protection Agency (EPA) as effective against COVID-19. To find a list of products that meet the EPA's criteria, use their [interactive tool](#).

Date	Time	Type of Cleaning		Staff Responsible for Cleaning	Staff Signature	Notes	Manager Initials
		Regular daily cleaning	High touch surfaces/high transit areas				
		<input type="checkbox"/>	<input type="checkbox"/>				
		<input type="checkbox"/>	<input type="checkbox"/>				
		<input type="checkbox"/>	<input type="checkbox"/>				
		<input type="checkbox"/>	<input type="checkbox"/>				
		<input type="checkbox"/>	<input type="checkbox"/>				
		<input type="checkbox"/>	<input type="checkbox"/>				
		<input type="checkbox"/>	<input type="checkbox"/>				



Disinfectant Mister

MERV 13



Safety Drills are still required by New York State and where students will be within 6 feet of one another for certain lockdown drills, facemask will be worn. Drills for grades 7-12 will be conducted for both cohorts, A-K students and L-2 students.

CHILD NUTRITION

All schools will continue to offer nutritious lunches. For students who are on remote instruction and who qualify for free and reduced lunch, meals will be prepared for pick-up at the school.

Lunch in schools will be hot and cold lunches delivered directly to the grade K-6 classrooms where students will be eating. For students in grades 7-12, grab-and-go style lunches will be prepared, and students will eat in the cafeterias while maintaining social distancing rules. Students will be provided disposable desk mats to use during the lunch period.

Elementary students will still enjoy recess with schedules and supervision at the buildings to assure the health and safety of the students.

Food allergy awareness remains a priority. All staff will receive training on recognizing and responding to an allergic reaction. Safety protocols such as positioning of seats and cleaning desks/tables after lunch will be in place at each building and within each classroom.

TRANSPORTATION

As per guidance, the school bus is considered an extension of the classroom requiring social distancing and frequent cleaning of the bus. Our transportation company, WE Transport, Inc., has assured that high touch areas such as handrails, seat tops and sides will be wiped down between bus runs. In addition, all busses will be cleaned and disinfected nightly. Other vehicle and staff requirements and considerations are detailed below.

School Bus Mandatory Requirements/Considerations

- Students wear masks and social distance.
- Vehicles are cleaned/disinfected daily.
- Vehicles and staff will not be equipped with hand sanitizer due to its combustible composition.
- Roof hatches and/or windows will be slightly opened to increase airflow when temps above 45°.

Bus Staff Mandatory Requirements/Considerations

- All staff are to perform a health assessment for COVID-19 symptoms prior to arriving to work.
- All staff are required to wear face coverings with optional face shield.
- All staff are trained on proper PPE use and the current signs/symptoms of COVID-19.
- Hand sanitizer is available in the buildings for bus staff.
- Bus staff who have direct physical contact with children must wear gloves.
- Staff are encouraged to wash hands with soap and water before AM/PM run.
- Staff are discouraged from touching their faces.

Students on Transportation Mandatory Requirements/Considerations

- Parents/Guardians required to perform daily health screener and ensure their child(ren) do not have COVID-19 signs/symptoms and/or a fever greater than 100°.
- Children residing in the same household seated together.
- Students wear a mask.
- Students social distance while on a bus.
- Students will be seated one per row.
- No eating and/or drinking on the bus.
- Social distancing protocols observed while students embark/disembark from the vehicle.
- Staggered arrival/departure times at the elementary and middle schools.
- Reconfiguration of unloading/loading locations for all schools
- Buses will be loaded from back to front.

The bus schedule below assures that social distancing can be maintained.

BUILDING	STUDENTS	DAYS	ARRIVAL TIME	DISMISSAL TIME	VEHICLE OCCUPANCY
High School	Last Name A-K	M & W	7:10 AM	1:40 PM	50%
	Last Name L-Z	T & TH	7:10 AM	1:40 PM	50%
Middle Schools	Grades 7 & 8: Last Name A-K	M & W	7:50 AM	2:10 PM	25%
	Grades 7 & 8: Last Name L-Z	T & TH	7:50 AM	2:10 PM	25%
	Grades 5 & 6	All	8:30 AM	2:35 PM	50%
Elementary Schools	Last Name A-K	ALL	9:00 AM	3:00 PM	50%
	Last Name L-Z	ALL	9:30 AM	3:30 PM	50%

SOCIAL AND EMOTIONAL WELL-BEING

The social-emotional and mental health well-being of our students and staff has been a priority of the District and will continue to be as we reopen. The efforts to ensure all students and staff receive appropriate support include ongoing and additional resources and programs:

- Creation of a *Coronavirus Parent and Staff Resource Page* on the District's website ([link here](#))
- Strategic Partnership with Northwell Health to provide additional support for our students, staff, and families
- Curriculum Writing for K-12 mental health and well-being aligned to the NYS Mental Health and Social and Emotional Framework
- Professional Development on trauma-informed care and education
- New programs for transitioning students in grades 5 and 9, MS 101 and Freshmen Seminar
- GoGuardian alert system
- SaySomething crisis reporting and alerting system
- Behavior specialists and evening crisis interventionist on staff

Since the March closure of schools, the District has hosted Parent Universities, launched a social and emotional learning resource page on the District's website ([link here](#)) and all counselors and pupil personnel staff have reached out to families in crisis.



SCHOOL SCHEDULES

Reopening schools for in-person instruction under the current guidelines from the DOH and NYSED required changes to our daily school schedules, primarily due to transportation. Below are the school schedules for **in-person instruction**.

Elementary K-4 (Sample Day)

Arrival 9:00-9:30
Reading
Writing
Math
Lunch/Recess
Special
Social Studies/Science
Dismissal 3:00-3:30

Middle School Grades 5 and 6

Period 1	8:38-9:15
Period 2	9:19-9:56
Period 3	10:00-10:37
Period 4	10:41-11:18
Period 5	11:22-11:59
Period 6	12:03-12:40
Period 7	12:44-1:21
Period 8	1:25-2:05
SEL/Remedial (3 Days)/MAP	2:05-2:25

Middle School Grades 7 and 8

Zero Period: Period 8 classes	7:58-8:34
Period 1	8:38-9:15
Period 2	9:19-9:56
Period 3	10:00-10:37
Period 4	10:41-11:18
Period 5	11:22-11:59
Period 6	12:03-12:40
Period 7	12:44-1:21
1- Remedial/MAP	1:25-2:00
2-Virtual Remedials	2:10-2:45

High School Grades 9-12

Period 1	7:25-8:02
Period 2	8:06-8:43
Period 3	8:47-9:24
Period 4	9:28-10:05
Period 5	10:09-10:46
Period 6	10:50-11:27
Period 7	12:31-12:08
Period 8	12:12-12:49
Period 9	12:53-1:30
Virtual Remedial	1:52-2:29

Students who are on the **Remote Learning Plan** will follow the same schedule as their classmates who are receiving **In-Person** instruction. The chart below illustrates the Remote Learning Plan schedule and type of instruction. The District will permit movement in and out of **Remote Learning** according to the schedule on the next page. The initial request for Remote Learning *must be received by noon on August 21st*. Transition from In-Person Instruction to Remote Learning after the opening of schools will occur up to three days from the request to the building principal. Changes will be permitted throughout the year.

Components	Elementary K-4	Elementary 5-6	Secondary 7-12
Schedule Class Size (per BOE Policy)	Daily, Monday-Friday K-2: 18-24 3-4: 20-28	Daily, Monday-Friday 5-9: 23-28	Daily, Monday-Friday
Type of Instruction	Live Google Meet, Teacher is live on Google Meet for 45 minutes per subject , consisting of 20-minute mini-lesson, 15-minute independent work, 10-minute closing of lesson.	5 Days for Synchronous Teaching via Google Meet (live teaching at least 50% of class period, including the beginning of and ending of the lesson <i>live</i>), All subjects, 3 Days After-School Remedial via Google Meet, All classes are 37 minutes.	3 Days for Synchronous Teaching via Google Meet (live teaching at least 50% of class period, including beginning of and ending of the lesson <i>live</i>), 2 Days independent work on Google Classroom, Daily prescriptive remedial via Google Meet, 3 Days After-School Remedial via Google Meet, All classes are 37 minutes.
Subjects Related services provided for students as per IEP and/or AIS plan, via Google Meet.	Reading/Writing Math Social Studies/Science (two-week rotation for social studies and science) Special	ELA, Math, Science, Social Studies Physical Education Music/Art, Quarterly classes (Health, Digital Enterprise, World Language, Family and Consumer Science, Coding), Remedial/SEL.	English Math Science Social Studies World Language Physical Education Music/Art Electives Prescriptive Remedial
Attendance	Taken daily during the Google Meet.	Students login for each class at the regularly scheduled time as per building bell schedule.	Students login for each class at the regularly scheduled time as per building bell schedule.
Grading: As Per POB BOE Grading Policy Standards-based K-4 0-100 Scale for 5-12	Grading completed by remote teacher and report card is the POB Elementary Report Card distributed each trimester as per academic calendar.	Grading completed by remote teacher and reported on Infinite Campus, report card distributed quarterly as per academic calendar.	Grading completed by remote teacher and reported on Infinite Campus, report card distributed quarterly as per academic calendar.
Times for School Day	9:35 AM-3:00 PM	8:38 AM-2:35 PM	Grades 7&8 7:58 AM-2:45 PM Grades 9-12 7:25 AM-2:29 PM

TEACHING AND LEARNING

Remote Learning Requests/Schedules: For students in the Remote Model, transition back to in-person instruction will occur as follows:

Notify by Date	Return to School Date
September 10, 2020	September 14, 2020
September 24, 2020	September 28, 2020
October 8, 2020	October 12, 2020
October 22, 2020	October 26, 2020
January 21, 2021	January 25, 2021
April 9, 2021	April 15, 2021

Attendance is a critical factor of any learning plan and the District is committed to requiring, monitoring and fostering an environment that supports regular attendance of all its students. The attendance procedures listed below will be in place for the 2020-21 school year.

Grades K-4: For students attending school **in-person**, attendance will be taken by their classroom teacher when students arrive to school. Attendance will be reported on the District's Student Management System, Infinite Campus. For students being **instructed remotely**, attendance will be taken during the Google Meets and recorded in Infinite Campus. Families will be notified by phone when a student is marked "absent".

Grades 5 and 6: For student attending school **in-person**, period-by-period attendance will be taken and reported on Infinite Campus. For students who are being **instructed remotely**, attendance will be taken during the Google Meets and recorded in Infinite Campus. Families will be notified by phone when a student is marked "absent".

Grades 7-12: For students attending school **in-person**, period-by-period attendance will be taken and reported on Infinite Campus. While students are engaged in **at-home** learning on alternating days, they will be required to log into their Google Classrooms at the start of each period where the teacher will take attendance and report it on Infinite Campus. For students who are being instructed remotely, attendance will be taken during the Google Meets and recorded in Infinite Campus. Families will be notified by phone when a student is marked "absent".

On Fridays, all grades 7-12 students will be instructed remotely. Students will follow their regular schedule for that day. Students must log into the Google Meet for each class where the teacher will take attendance and report it on Infinite Campus.

During a complete closure of schools where students are engaged in online learning, attendance will be taken by the teacher during the Google Meet for each class and record it on Infinite Campus. School administration will keep records and refer chronically absent students to the Pupil Personnel staff. These staff members will work to address issue related to chronic absenteeism.

Grading during the 2020-21 school year will return to the Board of Education Policy on Grading for all

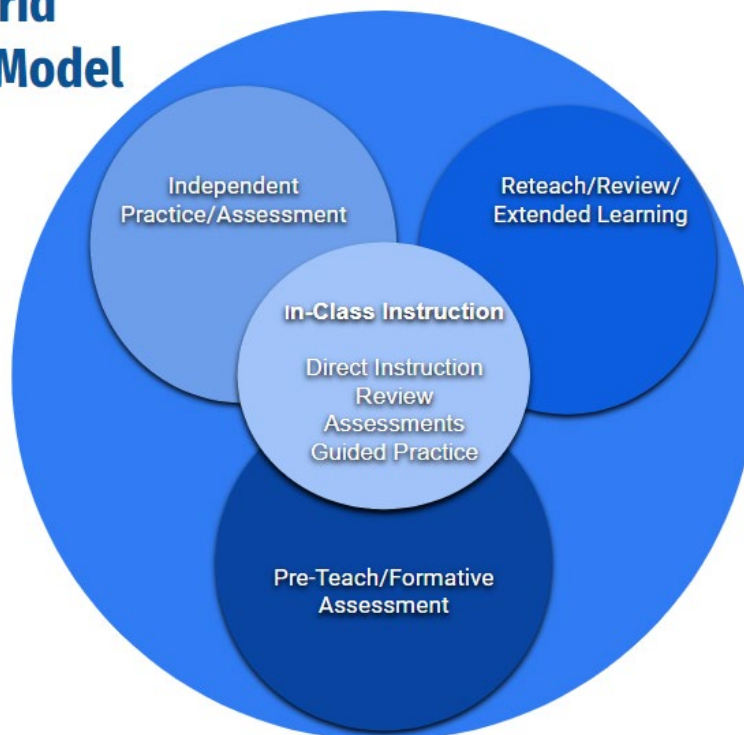
students, K-12. Families will receive regular updates on their children's progress via report cards, progress reports, and parent-teacher conferences. Students in grades 5-12 will have their graded work recorded in Infinite Campus.

Alternate-day learning for students in grades 7-12 who are attending school in the *In-Person* Model, the *Remote Learning* Model is a critical component of the students' academic program. The District's chairpeople and directors will continue to work with teachers to identify rigorous and relevant learning experiences that will move the curriculum forward but provide enough support in order to ensure student success. Students will be required to submit their work at the end of each instructional period. This submitted work will inform the next-day's lesson with the teacher.

Support for students working from home in grade 9-12 is available with virtual Prescriptive Remedial classes and after-school Remedial sessions. Buildings will post the schedules for these Remedial sessions and the corresponding teachers' Google Meet Codes.

Friday's live, synchronous lessons for grades 7-12 from home will permit all students in the class to work together and provide the teacher with an opportunity to assess the student progress between the two groups of students (A-K/L-Z) and the collective progress toward curricular goals. It also allows students to engage with all their classmates once a week, an important aspect of a learning community.

7-12 Hybrid Instructional Model



The District will closely monitor student progress and the progress toward curricular goals. If it is determined a change in the instructional model needs to be made in order to assure student success, adjustments will be made.

SPECIAL EDUCATION

The Special Education students in our District were identified as a group that should be considered outside of other groups by the District Reopening Committee. The recommendation to the Board of Education was to prioritize the amount of in-person instruction students with Individual Education Plans (IEP's) receive. As such, the K-6 everyday in-person model permits the students with IEP's to attend school daily and receive their IEP programs, accommodations, and related services. For students in grades 7-12 in Special Class and in the Life-Skills program will attend school in-person Monday-Thursday, and on Fridays, remotely. All 7-12 students will receive Resource Room and related services as scheduled per their IEP's.

Other important components of the POB Reopening Plan related to Special Education include:

- Special Education Programs and Related Services will be provided per Student's Individual Education Plan (IEP) or 504 Plan.
- Contingency Remote Plans will be developed in collaboration with parents/guardians that will follow the schedules, as closely as possible, of the *In-Person* model.
- Special Class, Resource Room, and Related Services will be provided in person when possible, via teletherapy for students in the Remote Learning Plan and for those in Grades 7-12 who may not be attending school each day in-person and/or when in a complete school closure.
- Focus and priority on providing social-emotional instruction and support.
- Assurance for equity and access to general education curriculum considering each student's unique needs.
- Students in ICT Classes will have both teachers during instruction as per IEP including those in the Remote Learning Model.
- Teachers and providers will assess students' current level of functioning and review present levels of performance and goals upon school reopening. The CSE will meet as needed to review and document necessary changes to assure student progress during the 2020-21 school year.

ENGLISH AS A NEW LANGUAGE (ENL)

Students identified as English Language Learners (ELL's) will receive continued support and instruction to meet the NYS "Units of Study" requirements. Upon school reopening, all ELL students will be assessed to determine their current levels of proficiency since the NYS English as a Second Language Achievement Tests (NYSESLAT) were canceled during the school closure in spring 2020. In addition, the District assures the following:

- Ongoing communication with families, in the language preference, regarding the identification and delivery of services for all English Language Learners,
- Attention to all timelines for identification, notifications, and placement of ELL students,
- Ongoing supports and interventions,
- Translation services provided for written and oral communication, and
- Increased attention to diversity and cultural awareness via professional development and events.

PHYSICAL EDUCATION GUIDELINES FOR K-12

Considerations for the physical environment:

1. When possible, use outdoor spaces for physical education instruction.
2. If using the gymnasium for physical education instruction keep windows and doors open to maximize circulation and air flow.
3. Use of locker rooms for changing shall be eliminated, students should come to school dressed in clothes that are appropriate for participation in physical education.
4. Use poly spots or other markings to help designate areas to ensure physical distancing among students. Current NYSED guidelines require students to maintain 12 feet when aerobic activity is taking place.
5. Sanitize equipment between classes.
6. Use of water fountain should be deemed out of service and students should be encouraged to bring their own water bottles to class.

Personal Hygiene

1. Students and staff will wash or sanitize hands as they enter and exit class.
2. Students will be taught proper hand hygiene, respiratory etiquette (i.e. covering nose and mouth when coughing or sneezing), and physical distancing guidelines.
3. Face coverings will be worn by staff and students, except during scheduled mask breaks.

Equipment Safety and Sanitation

1. There will not be shared equipment among students.
2. Physical education equipment will be inventoried to identify which pieces of equipment can be easily and effectively sanitized.

Instructional Strategies

1. POB will continue to address State and National Standards for K-12 Physical Education by selecting associated activities that require little or no use of shared equipment by students. Teachers will shift the focus of their curriculum to Standard 3 (health-enhancing fitness), Standard 4 (personal and social responsibility) and Standard 5 (value of physical activity) and incorporate activities for Standard 1 (motor skills and movement patterns) and Standard 2 (movement concepts) which are safe and appropriate. NOTE: In some situations, it may not be possible to address all Grade-Level Outcomes due to the constraints of physical distancing.
2. Physical Education classes will focus more on individual pursuits or skills rather than traditional team sports or activities (e.g., dance and rhythms, exercises without equipment, fitness, mindfulness, outdoor pursuits, track and field, throwing underhand, kicking and target games).
3. Games and activities that require no physical contact and do not require students to be in close physical proximity to each other will be used in physical education classes.
4. POB will focus efforts on the development of health education skills (e.g., self-management, interpersonal communication).

Recess

Recess helps students achieve the recommended 60 minutes of physical activity per day for children and adolescents, which can improve strength and endurance, enhance academic achievement, and increase self-esteem. Recess also helps students practice social skills such as cooperation, following rules, problem-solving, negotiation, sharing, and communication. Opportunities for free play, to engage in physical activity, and to practice social skills are especially important during the COVID-19 pandemic.

1. POB has identified available indoor and outdoor spaces on school property that can be used for recess, and multiple areas where recess can be held for different cohorts of students to minimize crowding. Whenever possible, POB will use outdoor spaces for recess.
2. When using indoor spaces for recess, schools will keep windows open to maximize circulation and air flow to accommodate for increased respiration by students while participating in physical activity.
3. Students and staff will wash or sanitize hands before and after recess. Signage from the CDC on handwashing will be posted as visual cues and reminders.
4. Schools will clearly identify play spaces or areas to help students identify how to safely comply with physical distancing guidelines and to provide enough opportunities for free choice during recess.
5. School personnel will encourage recess games and activities that do not require physical contact or for students to be in close physical proximity with each other. Also, equipment will not be shared among students.

TECHNOLOGY AND CONNECTIVITY

The District has been a one to one district for grades 5-12 for many years. During the closure of spring 2020, Chromebooks were distributed to students in grades K-4 and families' access to high-speed internet was evaluated. It was determined that families had access to high-speed internet already, or if not, were connected to resources to secure high-speed internet. The attendance logged in the Google Classrooms revealed that all students were able to connect with their teachers and learning during the spring closure.

A survey of families in July 2020 revealed that 98.5% of families in the District have access to high-speed internet. Upon the return to school, the District will survey the families again and connect families who do not have access to high-speed internet to service providers.

The District has created an *AsktheTech* application on its website ([link here](#)) and a robust offering of online tutorials of the various digital learning tools used in the classroom ([link here](#)).

ATHLETICS AND EXTRA CURRICULAR ACTIVITIES

The NYS Public High School Athletic Association has announced that the official start date of the Fall 2020 sport season is delayed until September 21, 2020, and that all fall Regional and State Championship events have been canceled. Should the Fall season be permitted to begin on September 21st, the District will assure that health and athletic safety protocols are in place.

Extracurricular activities are an integral part of a student's school experience and support social and emotional well-being; therefore, all clubs and activities are under review to determine which ones can run remotely. Schools will not be permitting in-person, after-school activities to run in the Fall in order to provide the custodial staff ample time to clean and disinfect the buildings. This decision will be reviewed after reopening.

Events and use of facilities are under review with Central Administration and the Board of Education and a determination on the use of facilities for events and outside organizations will be made prior to the reopening of school.

STAFFING CONSIDERATIONS

The District has been proactive in securing adequate staff for its additional sections that have resulted in creating cohorts that permit social distancing. In addition, it is anticipated that more staff may need to remain at home due to illness. Therefore, the District will provide each building with the following additional support:

- Elementary Schools: Three daily Substitute Teachers per building
- Middle Schools: Ten daily Substitute Teachers per building
- High School: Six Per Diem Substitute Teachers

PROFESSIONAL DEVELOPMENT



The District is committed to its long-standing tradition of offering ongoing professional development of staff and administrators. While in closure and throughout the summer, staff continued learning, specifically in areas related to digital teaching and online learning, COVID Contact Tracing, reading interventions and programs, and social, emotional, and mental health and well-being. Below is data through July 2020 on the professional development in which the POB staff engaged.

FOCUS AREA	PROFESSIONAL DEVELOPMENT OPPORTUNITIES	ENROLLMENT
Mental Health & Wellness	COVID-19 Contact Tracer Certification Module (Required for Health Teachers)	8
Mental Health & Wellness	COVID-19 Contact Tracer Certification Module	48
Mental Health & Wellness	Unpacking NYS Mental Health Standards	21
Online Learning Resource	Screencastify	134
Online Learning Resource	EdPuzzle	122
Online Learning Resource	Padlet	77
Online Learning Resource	Kami	105
Online Learning Resource	Nearpod	99
Online Learning Resource	Google Classroom	85
Coding Platform	KidOYO	16
Special Education	Linda Mood-Bell Academy and Seeing Stars-Visualizing and Verbalizing	11
Special Education	Integrated Co-Teaching	13

GUIDANCE

The guidance used to inform this plan was provided by the CDC, NYS DOH, and NYSED. The links to these documents are listed below.

[https://www.governor.ny.gov/sites/governor.ny.gov/files/atoms/files/Pre-K to Grade 12 Schools MasterGuidance.pdf](https://www.governor.ny.gov/sites/governor.ny.gov/files/atoms/files/Pre-K_to_Grade_12_Schools_MasterGuidance.pdf)

<http://www.nysed.gov/coronavirus/guidance-p-12-schools>

<https://www.cdc.gov/coronavirus/2019-ncov/community/schools-childcare/schools.html>

<https://www.cdc.gov/coronavirus/2019-ncov/community/schools-childcare/prepare-safe-return.html>

APPENDIX

FREQUENTLY ASKED QUESTIONS (FAQ)

As information about reopening was released, the District provided regular updates to its FAQ documents in order to assist families in their decisions about September's return to school. The *AsktheSupt* button on the District's website provided quick access for families to enter questions and to receive responses. The documents below and on the subsequent pages are FAQ's from July-August 2020. The POB Reopening Plan document is a dynamic one and as more questions are asked, the FAQ pages will be updated. A link to the FAQ's is posted on the District Website on the Reopening Schools page under, "District Communication" ([link here](#))